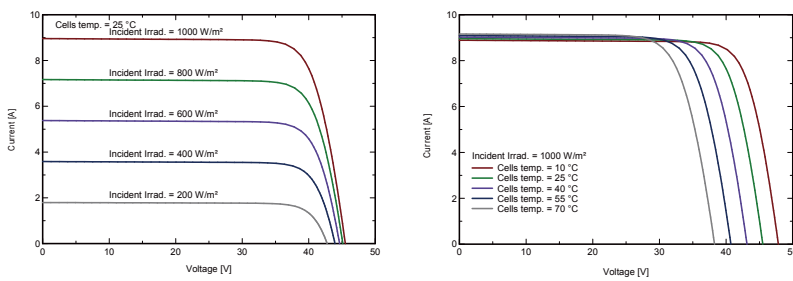


Electrical Characteristics

Module Type	WT-320-6PA		WT-325-6PA		WT-330-6PA		WT-335-6PA	
	STC	NOCT	STC	NOCT	STC	NOCT	STC	NOCT
Maximum Power -P _{mp} (W)	320	236	325	240	330	244	335	248
Open Circuit Voltage -V _{oc} (V)	45.5	42	45.7	42.2	45.9	42.4	46.2	42.6
Short Circuit Current -I _{sc} (A)	8.96	7.24	9.03	7.30	9.12	7.37	9.20	7.43
Maximum Power Voltage -V _{mp} (V)	37	34.6	37.3	34.8	37.5	35.0	37.7	35.3
Maximum Power Current -I _{mp} (A)	8.65	6.83	8.72	6.89	8.80	6.98	8.89	7.02
Module Efficiency STC-η _m (%)	16.49		16.75		17.01		17.26	
Power Tolerance (W)	(0,+4.99)							
Maximum System Voltage (V)	1000 (TÜV)							
Maximum Series Fuse Rating (A)	15							
Pmax Temperature Coefficient	-0.41%/°C							
Voc Temperature Coefficient	-0.32 %/°C							
Isc Temperature Coefficient	+0.05 %/°C							
Operating Temperature	-40~+85 °C							
Nominal Operating Cell Temperature	45±2 °C							

STC: Irradiance 1000 W/m² module temperature 25°C AM=1.5
 NOCT: Irradiance 800 W/m² ambient temperature 20°C wind speed :1m/s Power measurement tolerance: +/-3%

Curve



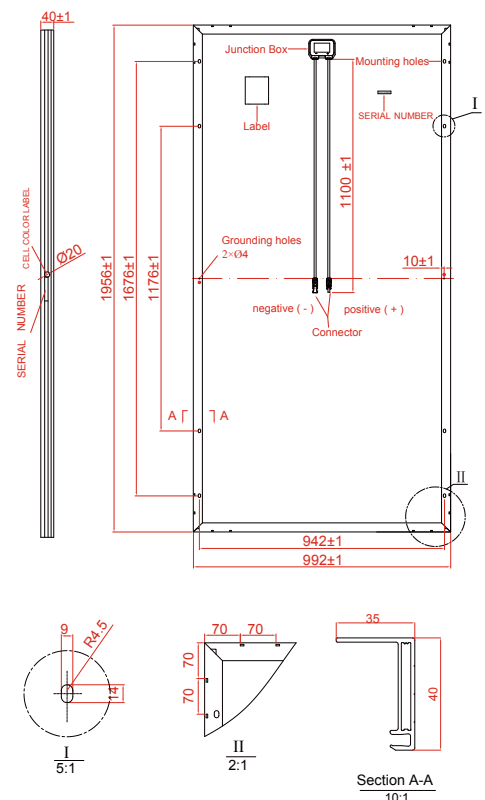
Mechanical Specifications

External Dimension	1956 x 992 x 40mm
Weight	21.5kg
Solar Cells	Poly crystalline 156.75 x 156.75 mm (72pcs)
Glass of Both Side	3.2 mm tempered glass, low iron
Frame	Anodized aluminium alloy
Junction Box	IP67
Output Cables	4.0 mm ² , cable length:1100 mm
Connector	MC4 Compatible
Mechanical Load	5400 Pa

Packing Configuration

External Dimension	1956 x 992 x 40mm	
Container	20'GP	40'GP
Pieces per Pallet	27	27
Pallets per Container	10	22
Pieces per Container	270	594

Technical drawing



* All Dimensions in mm
 * The above drawing is a graphical representation of the product.
 For engineering quality drawings please contact Wotech Solar

Specifications are subject to change without further notification